

McDonald's Powdered Base Hot Chocolate Dispenser Model 352



Manufactured by
Karma, Inc.
500 Milford Street
Watertown, WI 53094
Telephone 800-558-9565
920-261-1424
Fax 920-261-3302
E-mail karma@karma-inc.com
www.karma-inc.com

**S
P
E
C
I
F
I
C
A
T
I
O
N
S**

Electrical: 2650 watts, 12 amps, 50/60 Hz

Plumbing: ¼ " ID feed waterline from filtered source waterline having a minimum of 25 static PSI

Unit Dimensions: 9¾" W x 22½"D x 24¼"H

Shipping Weight: 46 pounds



KARMA Inc.

P.O. Box 433
Watertown, WI 53094 USA
920-261-1424
800-558-9565
Fax 920-261-3302

Producers of dependable dispensing equipment

Internet Web Page
<http://www.karma-inc.com>
E-mail - karma@karma-inc.com

Karma dispensers are covered by one or more U.S. patents and applications and corresponding foreign patents and applications

Part number 14888

INSTALLATION PROCEDURE

WATERLINE

1. Flush the incoming waterline by running water through it. This will remove any foreign particles that may be in the waterline.
2. Water supply: Connect ¼" O.D. flared flexible waterline to the back of the unit using the flare nut provided.

SWITCHES

CHECK ALL SWITCHES

FUNCTION SWITCH—Behind the product hopper on the right side— The switch should be in the up position for waterline operation.

DISPENSE/FLUSH SWITCH- Located behind the front door, left side of front panel.
UP POSITION—Dispense
DOWN POSITION—Flush

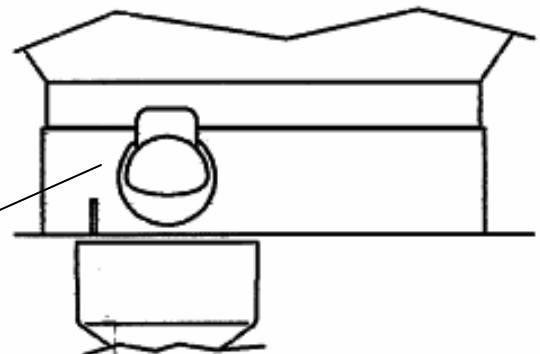
MASTER SWITCH—Behind front door, upper right front panel. UP POSITION ON.

1. Tank will begin filling
2. Heater will turn on automatically
3. Water will turn off when the water has reached the proper level in the tank
4. Allow approximately 20 minutes for the water to reach proper serving temperature.

FILL PRODUCT HOPPER

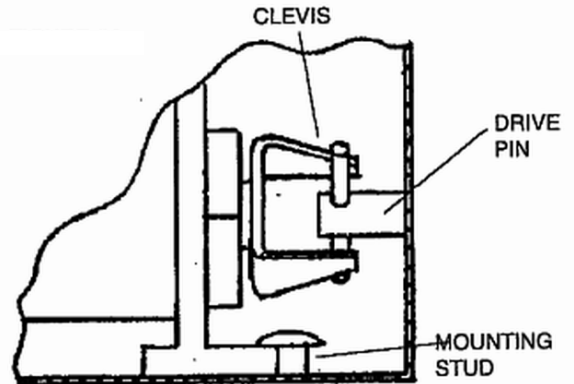
1. Using hopper spout, lift hopper up and pull forward.
2. Remove the cover and fill with product.

SPOUT



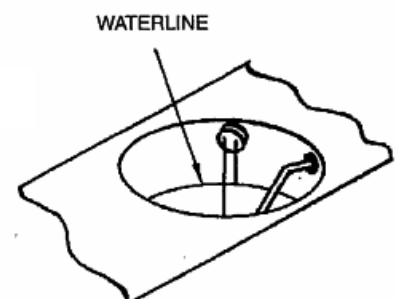
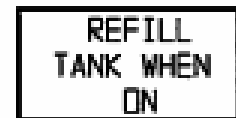
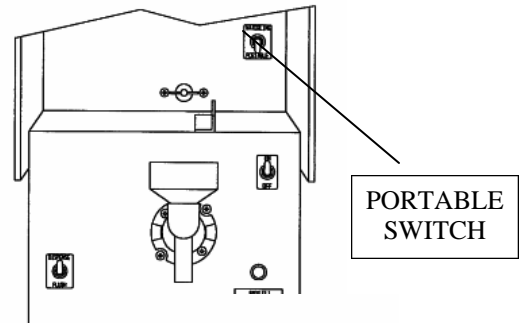
INSTALL PRODUCT HOPPER

1. Position the U-shaped clevis so that it will engage with the drive motor pin when it is installed in the hopper compartment.
2. Slide hopper against the side rail of the mounting plate. Slightly lift up the front of the hopper while pushing hopper backwards until the back of the hopper slips under the mounting stud on the bottom of the inner compartment.
3. Place a cup under the spout and dispense a serving from the hopper to prime system.



FUNCTION SWITCH –PORTABLE OPERATION

1. Turn off water supply. Disconnect water from dispenser.
2. Open front door.
3. Push master switch to the center (OFF) position.
4. Push the function switch down for portable operation .
5. Affix the “REFILL TANK WHEN ON” decal below the light located on the right front of the dispenser.
6. Fill the tank until water touches the short probe. Hot or cold water may be used, but hot water will shorten the heat-up time.
7. Open the front door. Push the master switch to the UP position (ON).
 - *Heater automatically turns on
 - *Water will be serving temperature in approximately 20 minutes.



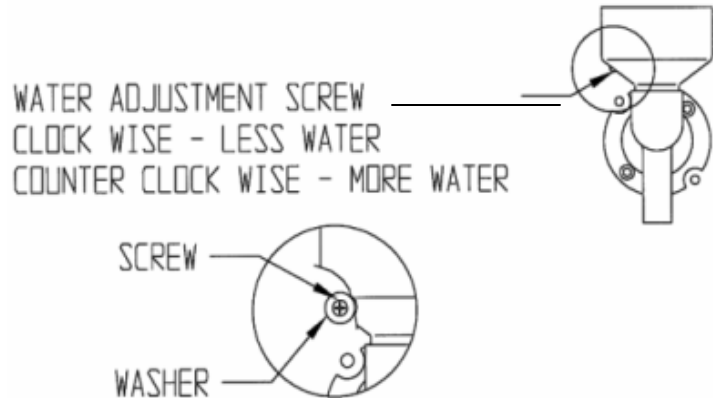
NOTE: IN PORTABLE USE THE PILOT LIGHT WILL GO ON INDICATING THE WATER TANK MUST BE REFILLED. REFILLING WITH HOT TAP WATER WILL SHORTEN HEAT-UP TIME.

RICHER/LEANER ADJUSTMENT

The desired taste of a serving is acquired by adjusting the water flow or the product throw.

WATER ADJUSTMENT

1. Locate the Phillips head screw with the white washer.
2. LESS WATER—TURN SCREW CLOCKWISE.
3. MORE WATER—TURN SCREW COUNTERCLOCKWISE.



CAUTION— OVER TURNING ADJUSTMENT SCREW WILL STRIP THREADS

CUP SIZE ADJUSTMENT

Note: The small and large cup size adjustment stems are located on the lower front of the dispenser.

1. Remove the drip tray
2. Remove two drip tray mounting screws.
3. Remove timer access plate.

TO CHANGE THE CUP SIZE:

Insert a small standard screwdriver into the slot of the timer stem. Rotate screw 1/8 th of a turn at a time.



CLOCKWISE FOR MORE TIME
(LARGER CUP SIZE)

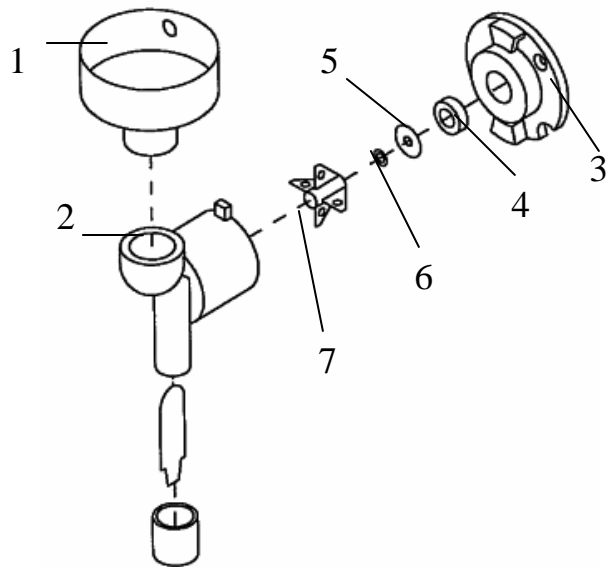
COUNTERCLOCKWISE FOR LESS TIME
(SMALLER CUP SIZE)

MAINTENANCE

DAILY CLEANING:

1. Open front door. Place a large cup under the dispensing spout. Place the FLUSH toggle switch, located on the left side of the dispenser front, to the DOWN/FLUSH position. Press and hold the “TOP OFF SELECTION” button for approximately 10 seconds.
2. Remove the funnel by grasping the funnel in your right hand, pull towards you and at the same time rotate the funnel ¼ turn to the left.
3. Remove the blender housing by turning ¼ turn clockwise and pulling away from the blender base.
4. Mix one ounce of a mild dishwashing soap, such as Ivory Liquid or the equivalent, with one gallon of 110°F warm water.
5. Wash all parts from the mixing system.
6. Using a bottle brush, completely clean the blender base.
7. Re-assemble blender housing and funnel to dispenser.
8. Return FLUSH switch to up position.
9. Wipe dispenser with a damp cloth.

- | | |
|---|-----------------|
| 1 | Funnel |
| 2 | Blender housing |
| 3 | Blender base |
| 4 | Blender seal |
| 5 | Slinger washer |
| 6 | O-ring |
| 7 | Whipper blade |



WEEKLY CLEANING

Repeat steps 1 through 9 above.

10. Pull whipper blade off motor shaft (#7).
11. Slide the O-ring (#6) and washer (#5) off the motor shaft.
12. Remove the blender seal (#4) from the blender base (#3).
13. Mix 1/5 ounce of U.S. Chemical sanitizer or the equivalent which will equal 100 parts per million of chlorine when mixed with 100° F water.
14. Submerge all parts in sanitizing solution for 3 minutes. Allow parts to air dry.
15. With a clean bottle brush and the sanitizing solution, completely clean the blender base (#3).
16. Re-assemble.
17. Return FLUSH switch to up position.
18. Wipe dispenser with damp cloth.

CLEANING PRODUCT HOPPER

1. When refilling hopper, inspect auger spring and inside of hopper for “crusty” buildup.
2. WHEN NECESSARY, disassemble hopper and wash all parts in a mild dishwashing soap and warm water.
3. Rinse parts and allow to COMPLETELY dry.
4. Reassemble product hopper.
5. Fill product hopper and install in dispenser. Refer to “Fill Product Hopper” section.
6. Place a cup under the dispense spout. Dispense and discard a serving to prime the

DELIME WATER TANK

1. Place the master switch in the off position (Switch should be in the down position).
2. Unplug the dispenser from the outlet.
3. Remove the product hopper.
4. Allow the water tank to cool. Remove the water tank cover. Pour 4 ounces of a non-toxic deliming solution into the tank.
5. Plug dispenser into outlet.
6. Wait 30 minutes.
7. Unplug dispenser. Allow water to cool.
8. Empty the water tank.
9. Rinse inside of tank and refill with cold water.
10. Empty water tank. Wipe inside of tank with a clean damp cloth.
11. Refill water tank. Plug in the electrical cord.
12. Install product hopper.
13. Dispense a serving to prime system.

TABLE OF CONTENTS

INSTALLATION PROCEDURE	1
FILL PRODUCT HOPPER	1
INSTALL PRODUCT HOPPPER	2
PORTABLE OPERATION	2
RICHER/LEANER ADJUSTMENT	3
CUP SIZE ADJUSTMENT	3
MAINTENANCE	
DAILY CLEANING	4
WEEKLY CLEANING	4
CLEANING PRODUCT HOPPER	5
DELIME WATER TANK	5
TROUBLE SHOOTING	6-7
EXPLODED VIEWS	8-12
WIRING DIAGRAM	13

CAUTIONS

1. The hot water in the water tank can cause severe burns. When servicing or cleaning do not tip or move machine in anyway that will cause water to spill.
2. Do not attempt to repair, adjust or replace components without unplugging electrical cord.
3. Water pipe connections and fixtures directly connected to a potable water supply shall be sized, installed and maintained according to federal, state, and local laws.

OPERATION MUST

KEEP THE FRONT DOOR CLOSED WHEN OPERATING DISPENSER. KEEPING THE DOOR CLOSED PREVENTS EXCESSIVE STEAM AND HUMIDITY FROM ENTERING THE HOPPER COMPARTMENT.

WARRANTY

Karma warrants, except as hereinafter provided, as follows:

1. That each product sold hereunder which is manufactured by KARMA shall be free of defects in materials or workmanship for a period of 1 year after the shipment thereof. This warranty is void in cases of damage in transit, negligence, faulty installation, abuse, abnormal usage, misuse, accidents, or failure to maintain the product according to the instruction manual provided. This warranty does not cover malfunctions due to dirty or clogged waterlines, lime-related conditions or other conditions, related to the local water supply. **THERE IS NO OTHER EXPRESS WARRANTY; KARMA HEREBY DISCLAIMS ALL IMPLIED WARRANTIES INCLUDING THE IMPLIED WARRANTY OF MERCHANTABILITY AND FITNESS FOR ANY PARTICULAR PURPOSE INDICATED BY PURCHASER TO KARMA.**
2. The sole obligation of KARMA hereunder shall be limited to repair or replacement, at the option of KARMA, of any defective products expressly warranted under the terms of this Agreement. This obligation does not include the cost or expense of travel time by service personnel, but does include the cost or expense of actual time spent to remove and replace a defective part or product. This obligation shall be conditioned upon receipt of KARMA of written notice specifically describing any defect or defects promptly after discovery. KARMA reserves the right to inspect products claimed to be defective and covered by warranty, either at Purchaser's location or at KARMA's principal place of business in Watertown, Wisconsin, freight pre-paid; the place of such inspection to be determined solely at the option of KARMA. Final determination as to whether a product is actually defective rests with KARMA. A defective product shall not be otherwise returned to KARMA unless **specifically authorized by KARMA.**
3. KARMA will not assume responsibility, pay expenses or accept invoices for unauthorized service, repairs, or replacement with respect to its products, even if defective. KARMA assumes no liability for labor charges incidental to the adjustment, service, repairing, removal or replacement of its products, or for the expense of repairs or any other direct or indirect costs incurred by Purchaser with respect to such products, except when approved in advance by KARMA.

LIMITATION OF LIABILITY

NO CLAIM MADE HEREUNDER BY THE PURCHASER, WHETHER AS TO GOODS DELIVERED OR FOR NONDELIVERY SHALL BE GREATER THAN THE PURCHASE PRICE OF THE GOODS IN RESPECT OF WHICH SUCH CLAIM IS MADE. KARMA SHALL UNDER NO CIRCUMSTANCES BE LIABLE FOR ANY LOSS OF PROFITS OR ANY OTHER INCIDENTAL OR CONSEQUENTIAL DAMAGES, OR FOR ANY DAMAGES IN THE NATURE OF PENALTIES.