

SERVICE & INSTALLATION MANUAL

PORTION CONTROL BULK CREAM DISPENSER MODEL 850

THIS REFRIGERATED DISPENSER IS FOR USE WITH COFFEE
CREAMER PACKED IN BAGS OR BIB'S



TABLE OF CONTENTS

Specifications.....cover page
Warranty.....cover page
Start-up Procedure.....page 2
Loading Procedure.....page 2
Programming Procedure.....page 3
Spare Parts Listing.....page 3
Wiring Diagram.....page 4

- *Dimensions: 9 .5" W x 29 .4"H x 21"D*
- *Shipping wt: 70 lbs*
- *Electrical: 115v/60hz 8 amps*
- *Refrigerant: CFC Free R134A*

**WARRANTY: 1 Year Parts and Labor Limited
Warranty. An additional 2 Year Parts Warranty
on the compressor. Contact Karma for details.**

People and Products You Can Depend On

**Producers of dependable dispensing equipment
for the food and beverage industries.**

KARMA dispensers are covered by one or more U.S. patents and applications and corresponding foreign patents and applications.



P.O. BOX 433
WATERTOWN, WI 53094 USA
920-261-1424
800-558-9565
FAX 920-261-3302
INTERNET WEB PAGE
[Http://www.karma-inc.com](http://www.karma-inc.com)
E-mail karma@karma-inc.com

Start-up Procedure:

1. Plug dispenser power cord into 115v 60hz receptacle.
2. Compressor will start in approximately 2 minutes. (Note: There is a 2 minute delay programmed into the control as a safety feature)
3. In approximately 20 minutes the product compartment will be cooled down to the proper temperature. The control display shows the compartment temperature at all times during normal operation.
4. Dispenser is now ready to load with creamer .

LOADING PROCEDURE

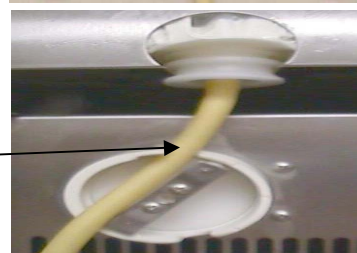
STEP 1:

Remove Bag Carrier from dispenser and lay Bag in Carrier as shown



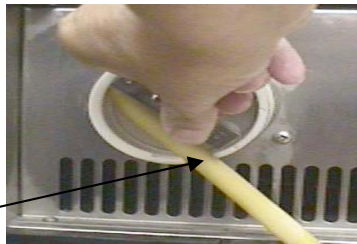
STEP 2:

Set Bag Carrier in dispenser and feed tubing through the top slot of the pump.



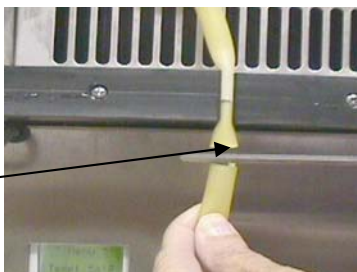
STEP 3:

Turn the pump rollers Counter Clockwise slightly so that tubing can exit thru the bottom slot of the pump



STEP 4:

Push tubing into channel then cut off all but 1/2 inch of the excess tubing

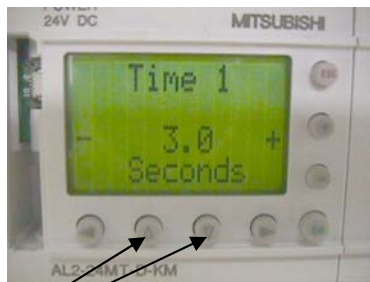


Programming Procedure:

The PLC is factory set to 3/8, 3/4, 1 1/8 & 1 1/2 ounces of creamer for the Small, Medium, Large and XLarge Portion sizes when the model 850 is Ordered having the Portion Control feature. Depending on the type of bag tubing used by the bag manufacturer, a slight Programming adjustment may be required. To increase or decrease the amount of creamer dispensed:

Step 1: Remove the lower front panel to access the PLC menu buttons.

Step 2:



Use either of these buttons to scroll Up or Down thru the menu. In a 4 portion size m850, S, M, L & XL sizes are Time 1, 2, 3 & 4 menu selections. Once you are at the desired Menu selection:

Step 3:

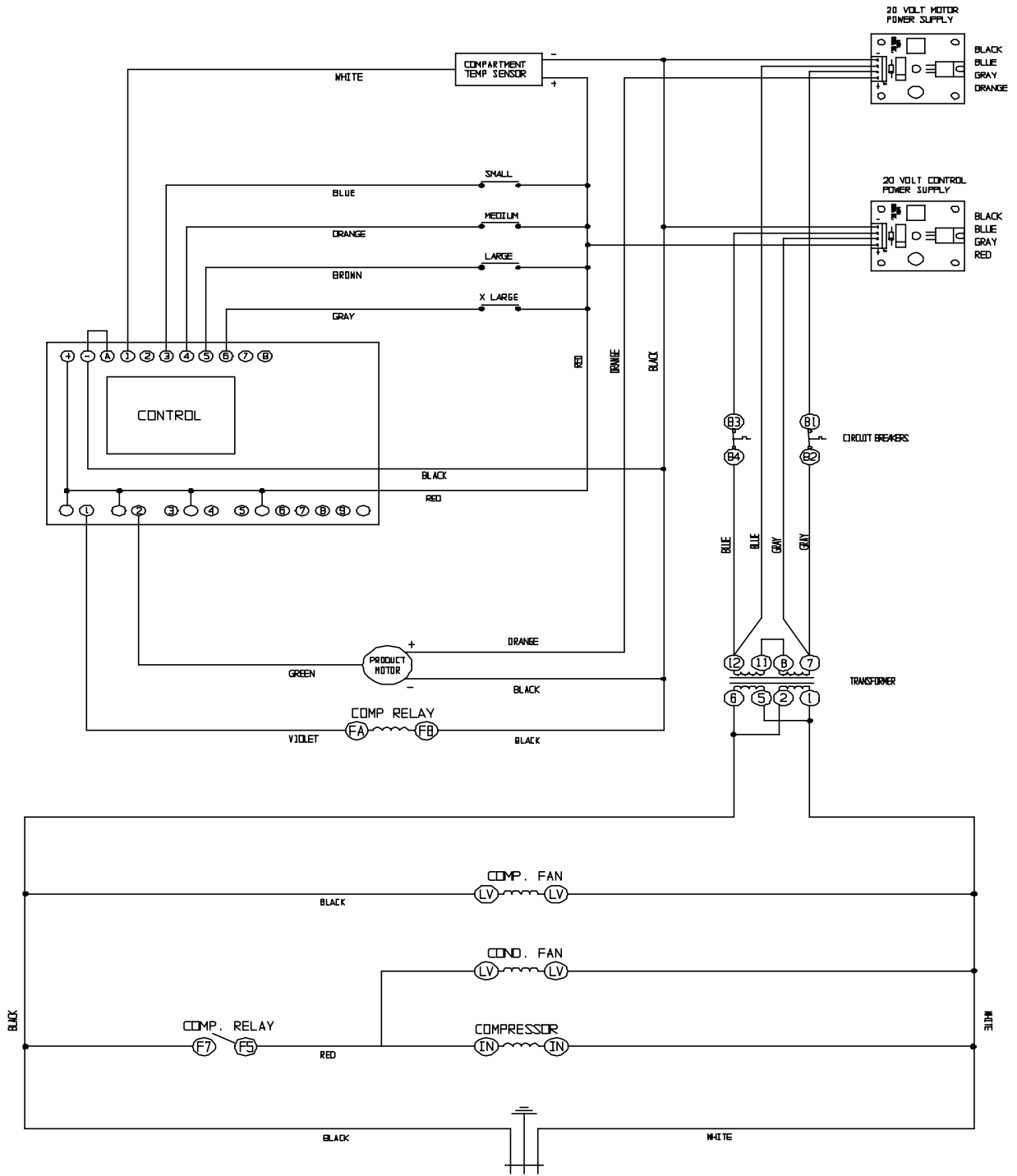


Use these + & - buttons to increase or decrease the display time shown. Increments are 1/10 of a second which equals approx. 1 cc

Once you have completed the Time change (volume desired), Press the ENTER button.

Spare Parts:

09095	1.0000	MOTOR PUMP 12VDC 90 RPM
10149	2.0000	FAN INNER COMP 890/3 120MM 120
10859	1.0000	SWITCH MEMBRANE 4 POS
10805	1.0000	HOUSING PUMP MOLDED
12006	2.0000	HINGE ASSY FREE SWING W/COVER
13427	1.0000	CORD LINE IEC 320 C13 18-3
13790	1.0000	BOARD MOTOR SPEED PWM P25220
13997	1.0000	RELAY 10A 24VDC COIL
14061	2.0000	BOARD MOTOR SPEED 24V ASSY
14150	1.0000	SENSOR TEMP COMP 892
14264	1.0000	LATCH DOOR 892
14817	1.0000	GASKET DOOR 850 (5395)
14830	1.0000	CONTROLLER PLC 850 (13929)
14833	1.0000	TRAY DRIP 850
14834	1.0000	INSERT DRIP TRAY 850
14839	1.0000	CABLE DOOR 850
14854	1.0000	LABEL LOADING PROCEDURE 850
14860	1.0000	CARRIER BAG ASSY 850
14863	1.0000	GUARD SPLASH 850
14867	1.0000	ROTOR ASSY 850



MODEL 850

120 VOLTS
50/60 Hz.

14866